



BOARDWALK TRAIL AT LADY BIRD LAKE

**PARKS AND RECREATION BOARD
BRIEFING 6/22/2010**

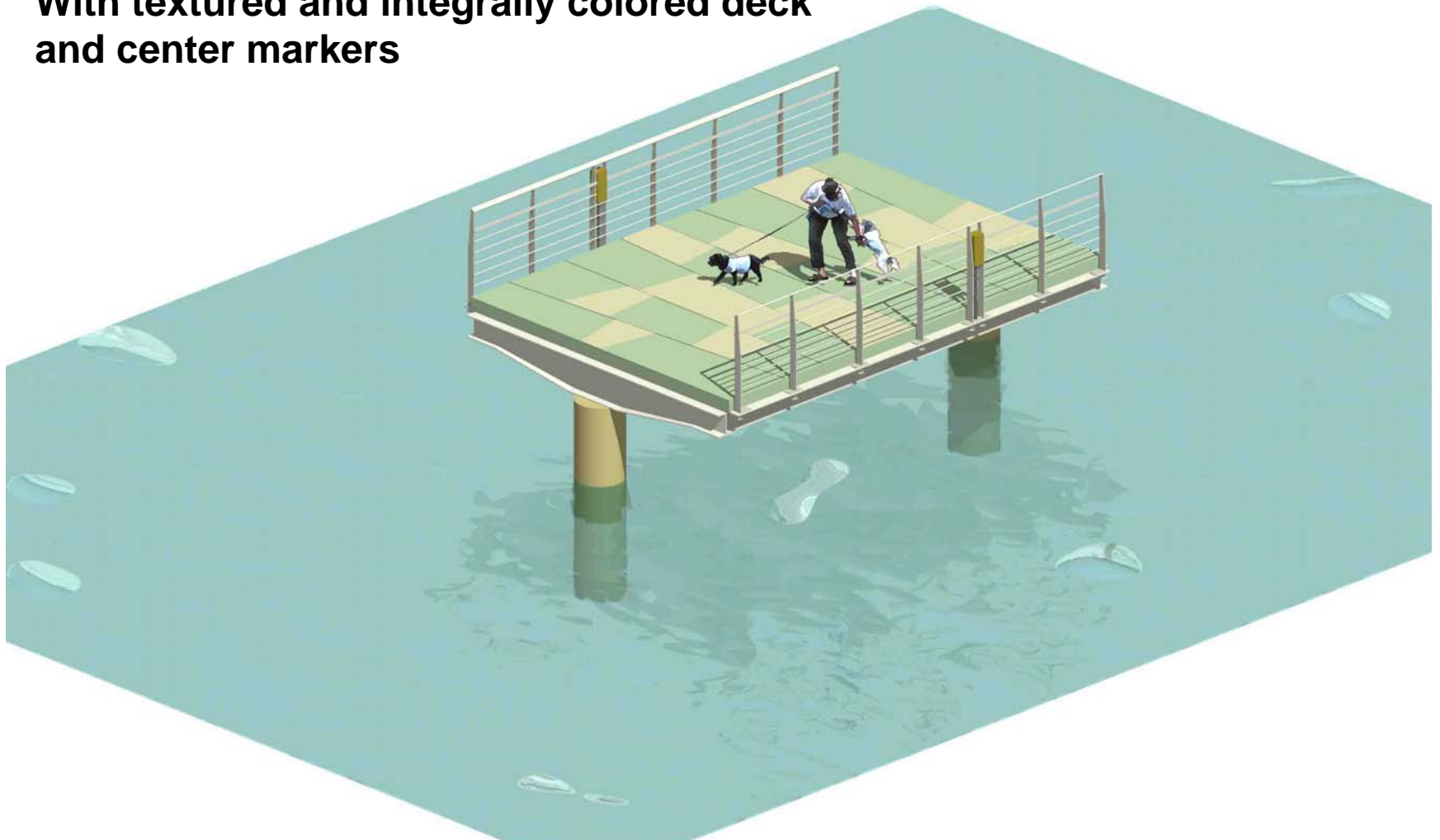
PROJECT SUMMARY

- Objective – Safe, attractive, multi-use trail link.
- Timeline
 - City design began 8/08 w/public input
 - Preliminary alignment approved by Council 3/09
 - Initial permitting submittal this spring 2010
 - Final design & permitting to be completed this year
 - Construction planned for 2011 pending funding
- A Parks and Recreation Department project

KIT OF PARTS

**Typical 20' long x 14' wide deck section on
24" dia. Concrete piers**

**With textured and integrally colored deck
and center markers**



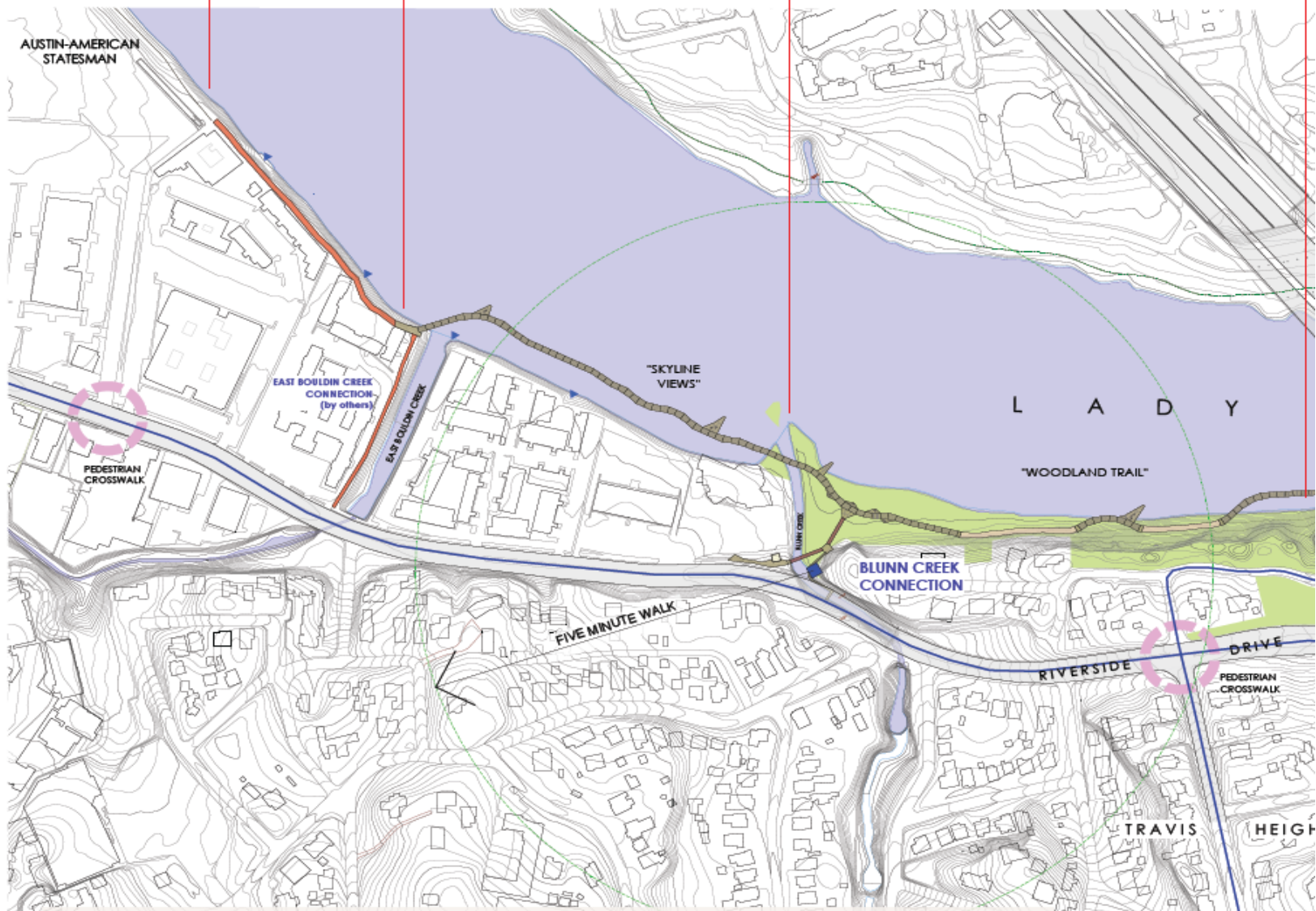
SKYLINE SEGMENT



EAST RIVERSIDE
750 ft.

SKYLINE SEGMENT
1,030 ft.

WOODED CORRIDOR
1,370 ft.



BOARDWALK TRAIL AT LADY BIRD LAKE

Jacobs Engineering Group • Collaborative Planning
 February 15, 2018

LEGEND



PEDESTRIAN CROSSING

BIKE PATH



CONCRETE BOARDWALK



BLUNN INTERSECTION



BLUNN RESTROOM

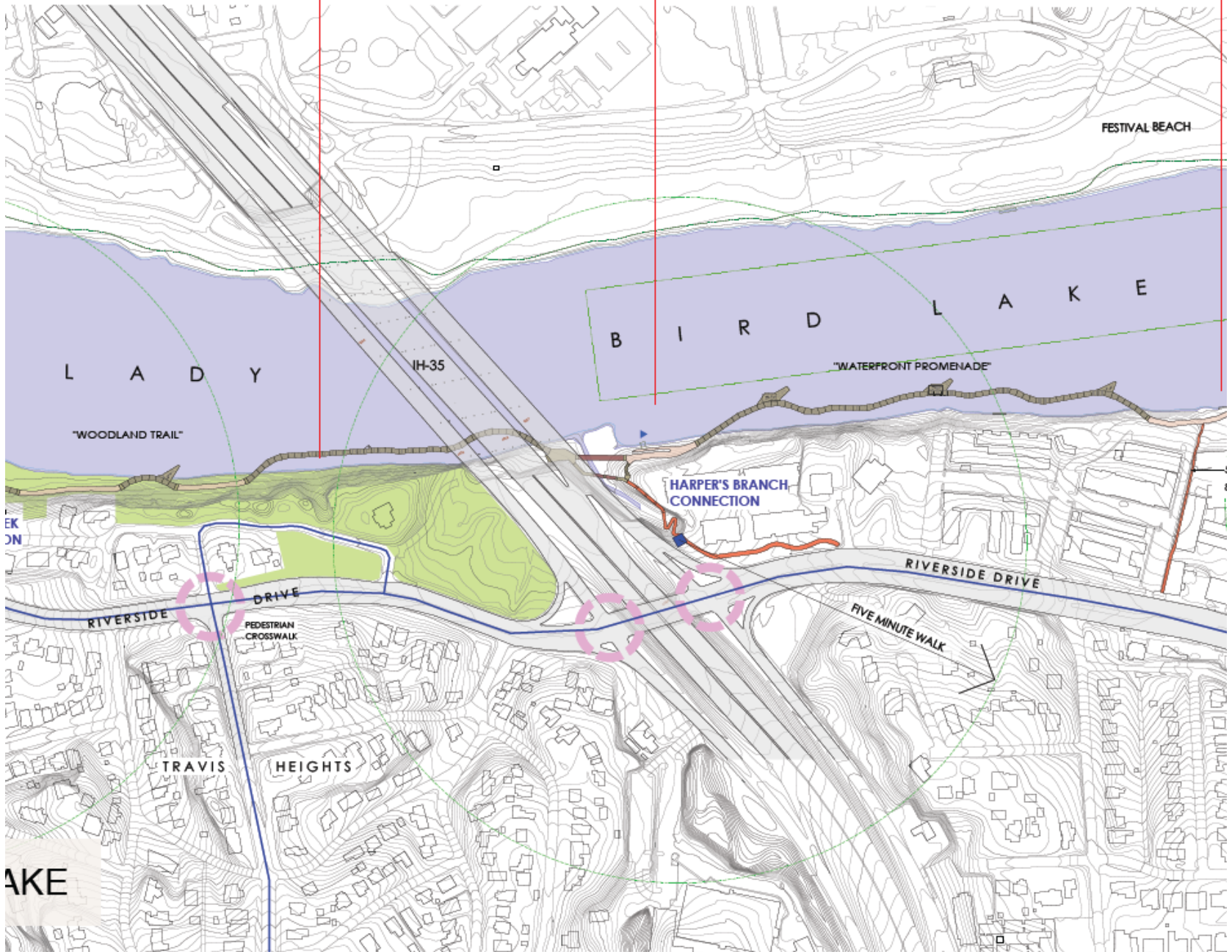
FROM THE NORTH



WOODED CORRIDOR
1,370 ft.

IH-35 SEGMENT
980 ft.

WATERFRONT PROMENADE
1,650 ft.



BIKE PATH

CONCRETE BOARDWALK

DECOMPOSED GRANITE TRAIL

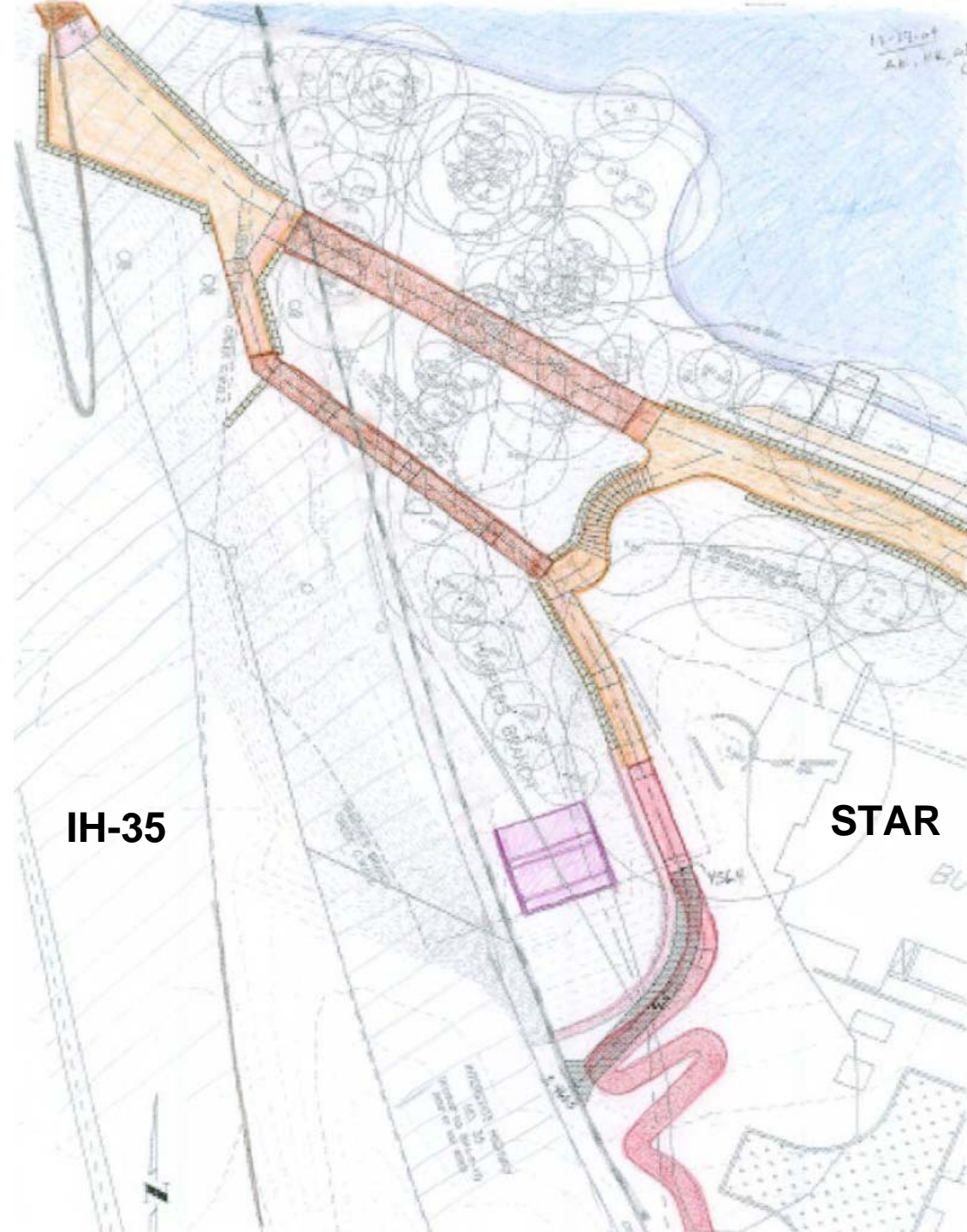
PRIVATELY DEVELOPED ACCESS TRAIL

METAL BRIDGE

BOARDWALK FROM IH-35



HARPER'S TRAILHEAD



IH-35

STAR

BOARDWALK at BREAKERS

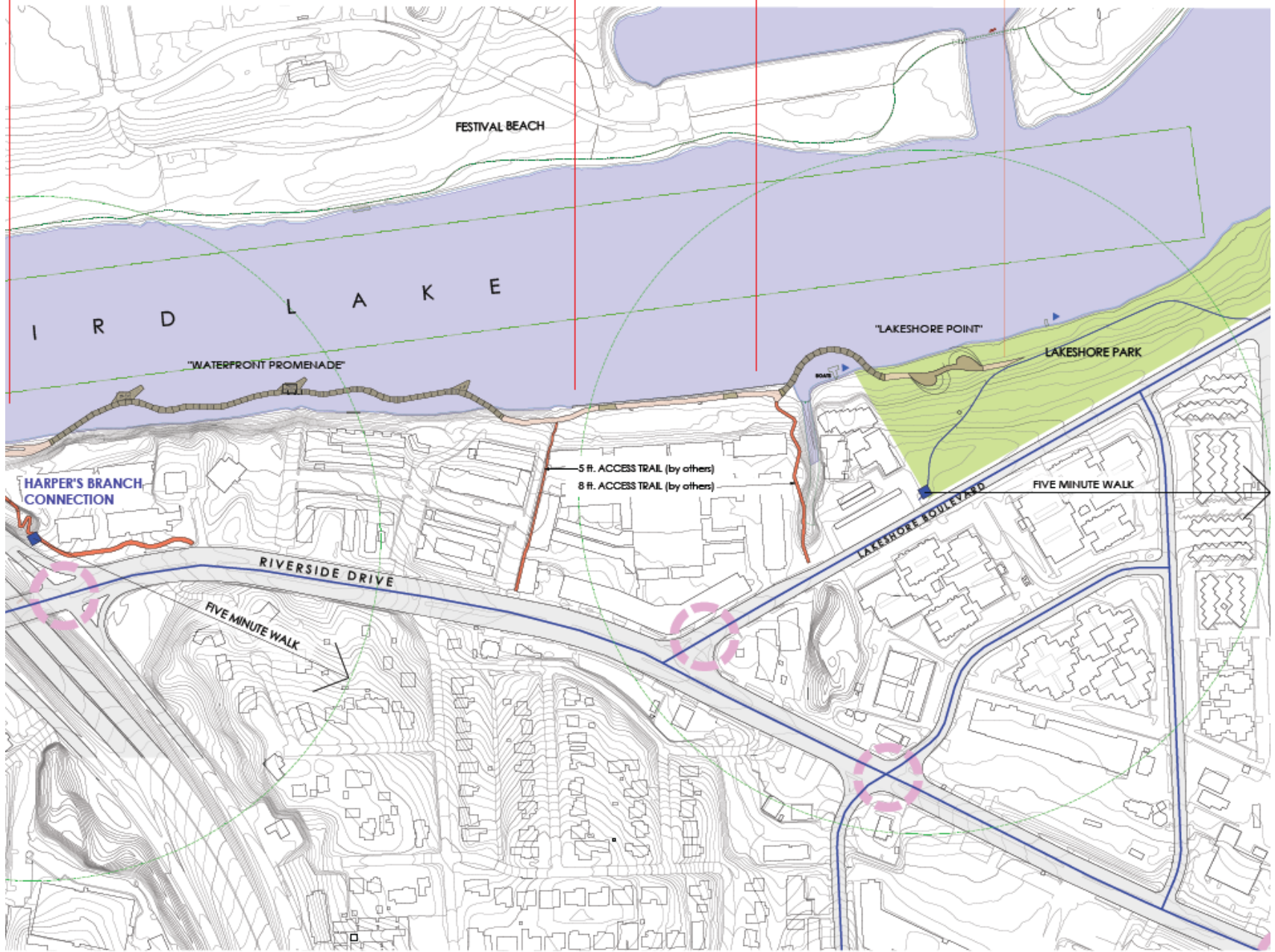
West towards IH-35



WATERFRONT PROMENADE
1,650 ft.

AMLI SEGMENT
550 ft.

LAKESHORE POINT
710 ft.



HARPER'S BRANCH
CONNECTION

"WATERFRONT PROMENADE"

FESTIVAL BEACH

"LAKESHORE POINT"

LAKESHORE PARK

5 ft. ACCESS TRAIL (by others)
8 ft. ACCESS TRAIL (by others)

FIVE MINUTE WALK

RIVERSIDE DRIVE

LAKESHORE BOULEVARD

FIVE MINUTE WALK

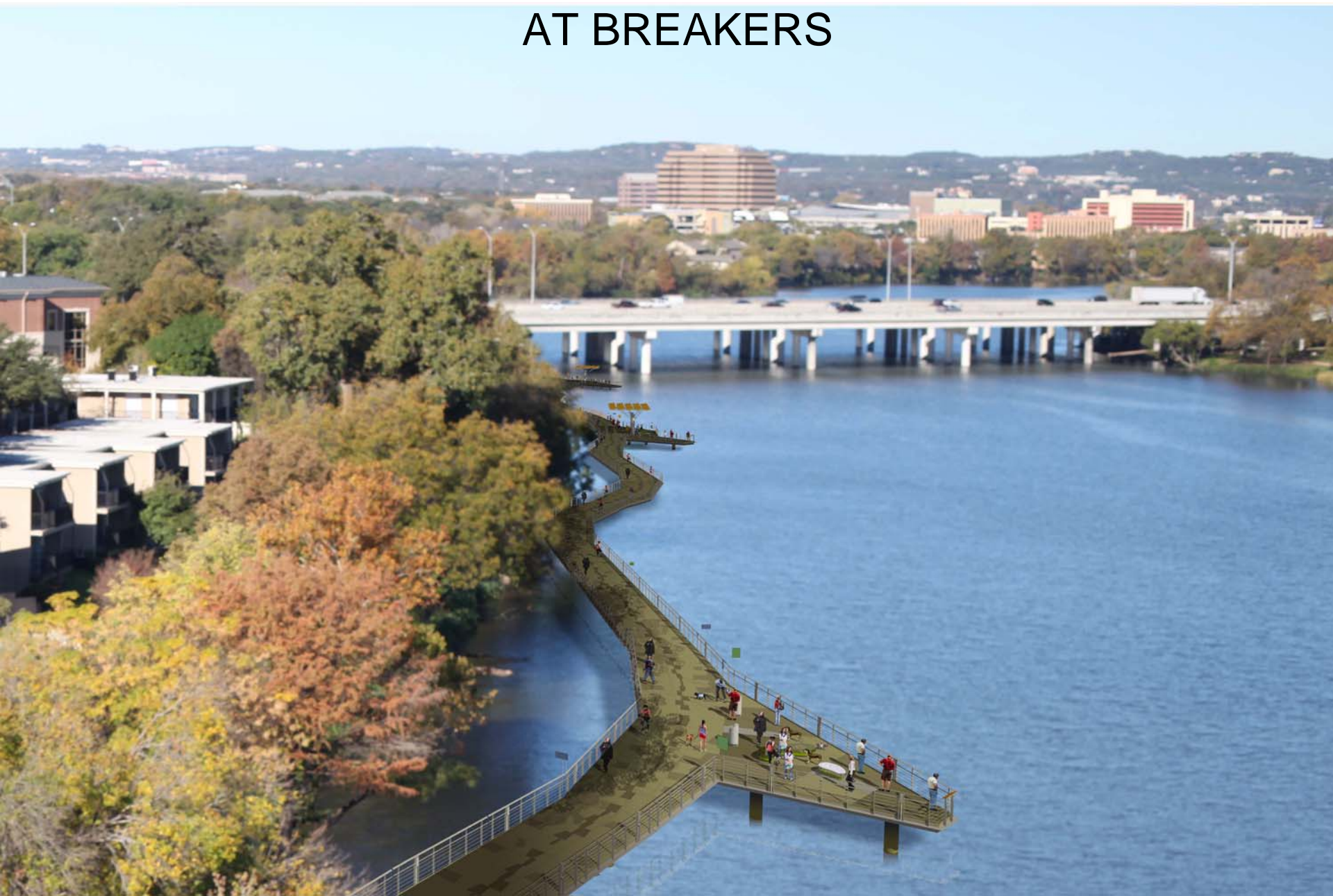
METAL BRIDGE



0 100 200 300 400 500
SCALE = 1" = 100'-0"

BIRD'S EYE VIEW

AT BREAKERS



LAKESHORE PLAZA

PLAN VIEW



NEXT STEPS

- Final Design details
- Second submittals for USACOE and City comments
- City hearings, variances and approvals
- Permits expected by end of 2010
- Construction funding

BOARDWALK TRAIL AT LADY BIRD LAKE

